

Greater Reliability Greater Quality



3 UNIQUE BENEFITS

PROVEN TECHNOLOGY PROVEN QUALITY



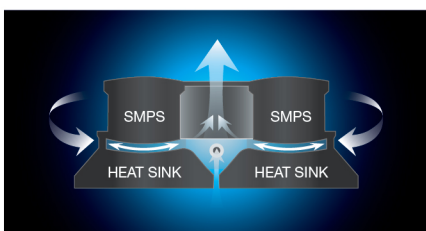
- Quality certified by ENEC
- IP67 protection and resistant to shock and vibration
- 100% made in Korea

CUSTOMISABLE OPTIONS



- Adjustable tilting brackets
- Various beam angles and asymmetric light distribution
- Versatile mounting options for different applications

ENHANCED SAFETY AND EASE OF INSTALLATION



- Superior thermal management by optimizing air circulation
- Rust proof SUS brackets for safety
- Lightweight for secure and easy installation

LE400 : LIGHTING THE EXTREME NEXT GENERATION OF HIGH-OUTPUT LED LIGHTING TO REPLACE UP TO 1KW HID FIXTURES

POSCO LED, the leader in industrial lighting with hundreds of references around the world brings you the solution to improve your facilities with its newly launched product, the LE400.

The next generation of high-output LED lighting, the LE400, which stands for "Lighting the Extreme" to replace up to 1KW energy-wasting conventional HID fixtures revolutionises the lighting industry providing customers with unparalleled performance, reliability and affordability resulting in a faster payback.

APPLICATIONS



The high-specification LED lighting is specially engineered for outdoor and high ceiling environments including industrial, commercial, transportation, public infrastructure applications, and even challenging areas such as heavy industries.

For more information about POSCO LED's LE400,
contact us at contact_int@poscoled.com

LE400

LIGHTING THE EXTREME

The next generation of high-output LED lighting, to replace up to 1KW HID fixtures.



POSCO LED, the leader in industrial lighting with hundreds of references around the world brings you the solution to improve your facilities with its newly launched product, the LE400.

3 UNIQUE BENEFITS OF SWITCHING TO POSCO LED'S LE400



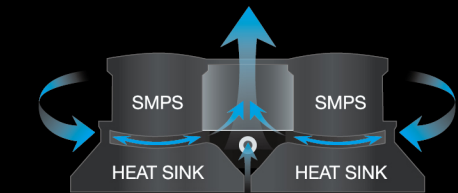
PROVEN TECHNOLOGY, PROVEN QUALITY

- Quality certified by ENEC, the third-party certification body with high credibility
- IP67 protection from moisture and dust and resistant to shock and vibration
- 100% made in Korea



CUSTOMISABLE OPTIONS

- Adjustable tilting brackets providing maximum flexibility of aiming
- Various beam angles for different heights and asymmetric light distribution for flood lighting
- Versatile mounting options for different applications



ENHANCED DETAILING FOR SAFETY AND EASE OF INSTALLATION

- Superior thermal management by optimizing air circulation
- Rust proofing SUS brackets for safety
- Lightweight for secure and easy installation

WHERE AND HOW TO USE

APPLICATIONS

The high-specification LED lighting is specially engineered for high-bay and outdoor environments including industrial, commercial, transportation, public infrastructure applications, and even challenging areas such as heavy industries



FACTORIES



GYMS



MINING YARD



HIGH-MAST POLES

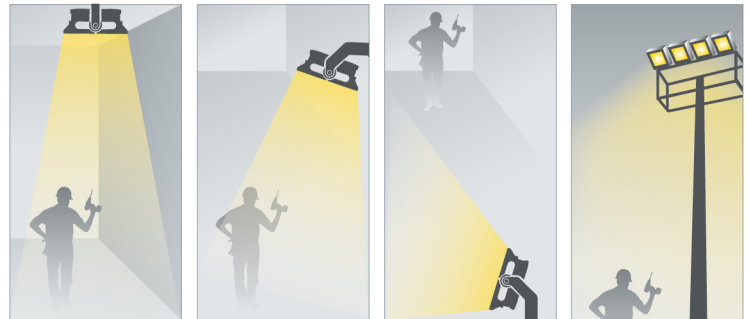


AIRPLANE HANGARS



INSTALLATION

AC cable should always be installed in the ground direction.



Ceiling Type, Wallmount Type, Flood Type, High-mast Poles

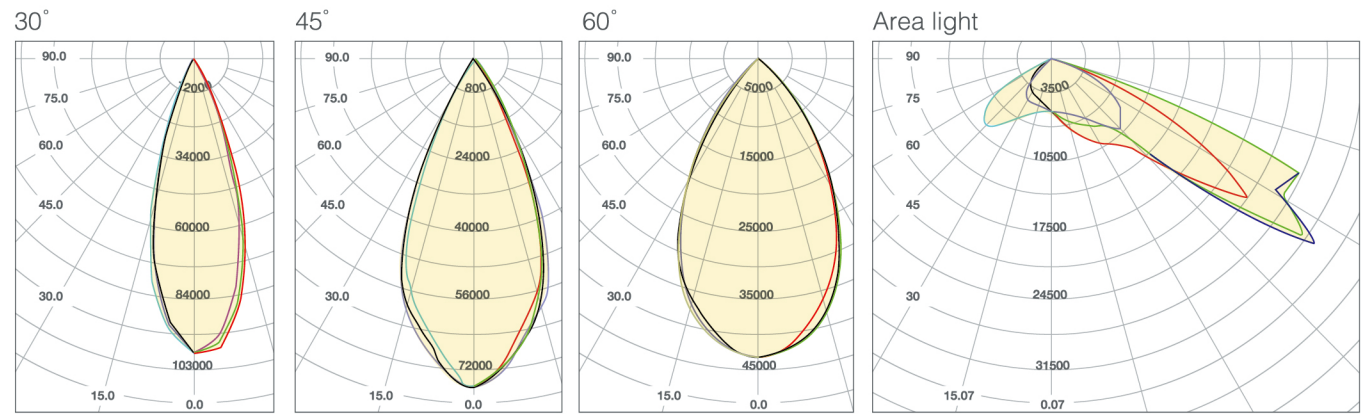
SAFETY WIRE



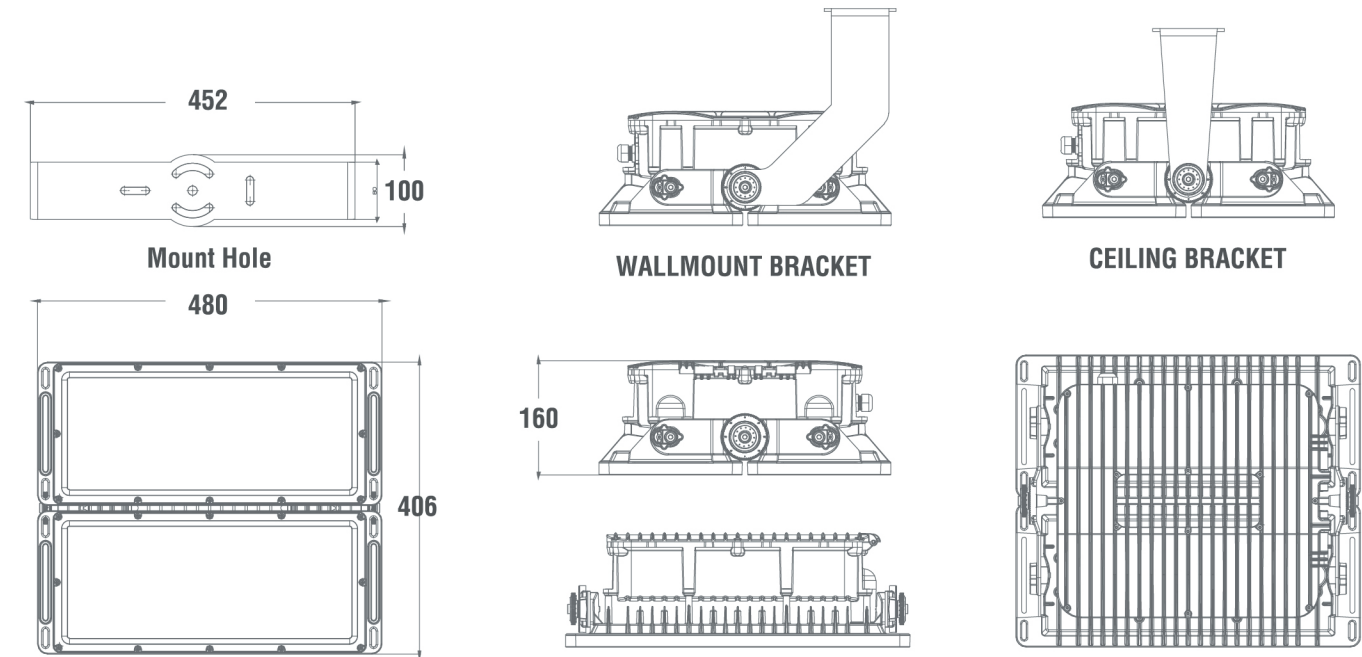
The safety wire should always be attached to the fitting securely while installing or conducting maintenance.

SPECIFICATIONS

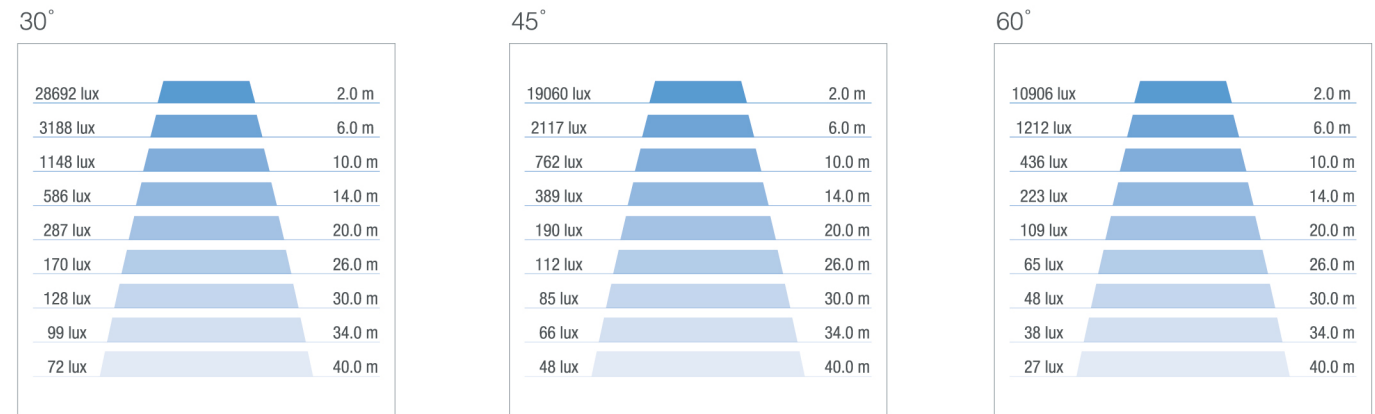
VARIOUS LIGHT DISTRIBUTION CURVE



DIMENSIONAL DRAWING (mm)



CONE LUX LEVEL (mm)



SPECIFICATIONS

SUBJECT	ABSOLUTE RATING			REMARK
	TYP			
WATT	385 W			±10% @220VAC
RATED VOLTAGE	100 ~ 240 V			
FREQUENCY	50/60 Hz			
POWER FACTOR	>0.9			
SIZE	(L) 480[1.57] X (W) 406[1.33] X (H)160[0.52] mm[ft]			
LIFE TIME	50,000 hrs			@ Ta 25 °C
OPERATING TEMPERATURE	-30℃ ~ 50℃ [-22°F ~ 122°F]			
STORAGE TEMPERATURE	-40℃ ~ 80℃ [-40°F ~ 176°F]			
RELATIVE HUMIDITY	< 90%			
WEIGHT	15[33.06] kg[lb] WITHOUT BRACKET			±10%
	VALUE			
	MIN	TYP	MAX	
LUMINOUS FLUX	38,500 lm	43,000 lm	-	±10%(30°/45°/60°)
	36,000 lm	40,000 lm	-	±10% (AREA LIGHT)
COLOR TEMPERATURE	4500 K	5000 K	5500 K	±10%
	70 Ra	-	-	-
SYSTEM EFFICACY		112 lm/W		30°/45°/60°
		105 lm/W		AREA LIGHT
PROTECTION	OVP, OCP, OTP, SHORT CIRCUIT PROTECTION (°C)			
SAFETY	< 4 @ L-L KV			
	< 6 @ L-G KV			
IP	67			



MADE IN KOREA

www.poscoled.com



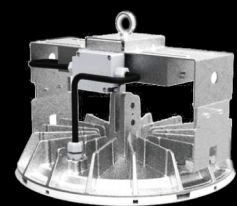
posco
LED

posco
LED

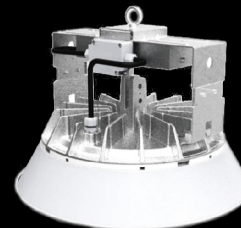
GREATER RELIABILITY.
GREATER QUALITY.



BL085



BL115



BL155 | 175 | 175_HF



HEADQUARTERS

4F, POSCO ICT BLDG, 255, PANGYO-RO, BUNDANG-GU,
SEONGNAM-SI, GYEONGGI-DO, 463-400, KOREA
TEL. 080-070-1472 / 031-723-3700

MANUFACTURING PLANT

162, JANGHEUNG-RO, NAM-GU, POHANG-SI,
GYEONGSANGBUK-DO, KOREA
TEL. 080-070-1472 / 054-280-3620

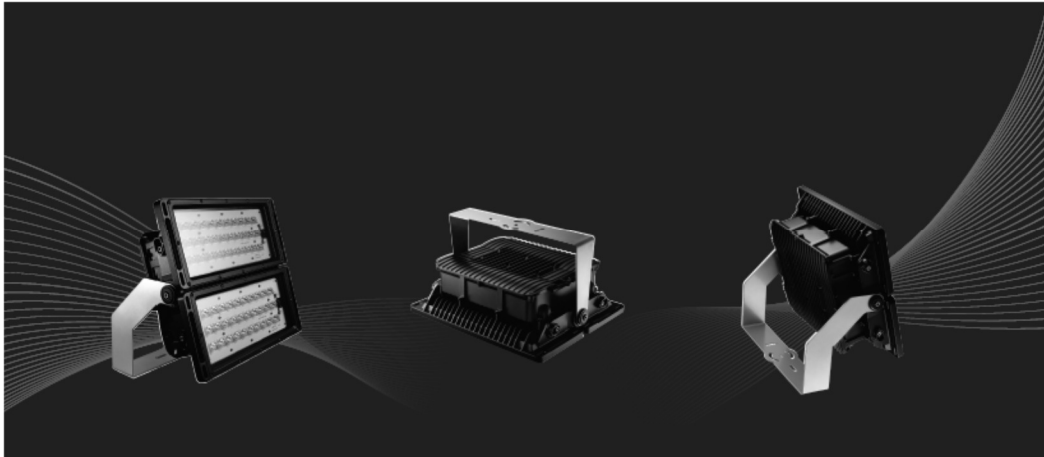


L I G H T I N G T H E E X T R E M E

LE400

POSCO LED, the leader in industrial lighting with hundreds of references around the world brings you the solution to improve your facilities with its newly launched product, the LE400.

POSCO LED LE400, the New Super Power LED Lighting. Breaks Performance and Affordability Barriers in Industrial Lighting



- Replaces up to 1KW traditional HID, delivering the industry's highest-level output for outdoor and high ceiling environments
- The first in the industry to offer superior performance, high reliability and affordability all in one package.



Seoul, South Korea, November 3, 2014 -- POSCO LED, the trusted leader in LED industrial lighting, releases its next generation of high-output LED lighting, the LE400, which stands for "Lighting the Extreme" to replace up to 1KW energy-wasting conventional HID fixtures, providing energy savings of up to 60%. The LE400 is POSCO LED's first flagship product, designed to target global industrial lighting markets and provide customers with unparalleled performance, reliability and affordability resulting in a faster payback.

The POSCO LED LE400, the high-specification LED lighting is specially engineered for outdoor and high ceiling environments including industrial, commercial, transportation, public infrastructure applications, and even challenging areas such as heavy industries, where high luminous efficacy and high reliability are essential because lighting is typically installed with a ceiling height of over 40 meters.

There have been numerous problems using HID lighting : tremendous amounts of wasted energy, high maintenance costs for lifting equipment, labour costs to replace lamps resulting in production shut down, and low lighting quality, all of which results in a significant decrease in productivity.

Although LED lighting can be an ideal alternative for this outdated HID lighting with reduced energy consumption, lower maintenance costs and longer lifetime, it can still be difficult for facilities managers to make the switch to LED technology. The main reason for this is because it is not easy, and can be expensive to enhance performance and affordability all at the same time. These factors have been primary hurdles to an accelerated adoption of LED lighting, especially in energy-consuming industries.

POSCO LED's new, innovative LE400, engineered by globally proven and advanced Korean technology, enables facilities managers to replace inefficient HID lamps with cost saving and green LED lighting without compromising light quality, at more competitive and affordable prices. It allows the POSCO LE400 to play a leading role in expanding the applications of LED lights in B2B markets all over the world.

The LE400 is a truly genuine replacement for up to 1KW legacy HID's which very few manufacturers can produce on the market due to technical limitations. The LE400 perfectly meets high-light output requirements for industrial applications and is highly reliable, even under extreme conditions and hazardous environments like steelworks, which are of the most difficult application areas in the lighting industry.

Posco LED's LE400, the super power and high reliable LED lighting is the result of an uncompromising commitment to developing high quality and affordable industrial lighting, achieved through collaboration with world prestigious institutions and companies such as POSTECH, RIST and global leading LED manufacturers.

As a leading LED lighting manufacturer in Korea which has one of the most competitive LED lighting markets, POSCO LED has proven the credibility of its products by running test beds over hundreds of industrial facilities in major markets. Its proven technologies and experience has resulted in the LE400 receiving the world renowned certification such as ENEC, which is one of the hardest qualifications to be awarded, notable for uniquely offering third-party testing; initial inspection, ongoing reassessment and production surveillance. The LE400 is IP67-rated from moisture and dust, which makes it ideal for outdoor environments. It features excellent luminous maintenance, significantly low malfunction rates and 4 times longer lifetime than conventional lighting.

The LE400 satisfies customers' various needs with versatile options, optimized for many different environments. Its adjustable tilting bracket allows customers to aim at almost everything they want to illuminate. It allows various beam angles for different heights and asymmetric light distribution for flood lighting. There are multiple mounting options for different applications. The LE400 has been designed to provide safety and ease of installation. Its SUS bracket is robust in terms of excellent resistance to corrosion, high temperatures, and chemicals - all of which increase its safety. Since the LE400 is significantly lighter than other LED high-output lighting fixtures in the same-wattage category on the market, this makes it easier and safer to install than ever before, helping to reduce labour costs and save time.

"The greatest advantage of the LE400 is its unmatched, proven reliability in the industrial lighting field, making the impossible possible, even in challenging areas." said In ho Lee, chief executive of R&D center at POSCO LED. "POSCO LED is an affiliate of POSCO, the most competitive steelmaker in the world, which has a lot of energy-consuming steelworks all around the globe. This is why POSCO LED employs a strategy to differentiate by focusing on development of high-specification industrial LED lighting products designed to withstand even the harshest conditions and by being committed to transforming the energy consuming industrial facilities to green, smart and eco-friendly factories, reducing carbon emissions with LED Lighting. We will continuously strive to evolve our state-of-the-art LED lighting technology to help customers to improve productivity and reduce maintenance costs with unique value, outperforming others in the industry."

The LE400 has drawn a great deal of attention from customers in major markets including Europe, Australia, and Asia even before its release. Some of these customers have already placed large orders.

POSCO LED is going all out to develop new products to meet the requirements of its customers who want brighter lights than the LE400 to replace over 1KW HID fixtures in the near future.

For more information about POSCO LED's LE400, visit www.poscoled.com or contact us at contact_int@poscoled.com.

3 Unique Benefits of Switching to POSCO LED's LE400

1. Proven technology, Proven quality

- Quality certified by ENEC, the third-party certification body with high credibility
- IP67 protection from moisture and dust and IK08 resistance to shock and vibration
- 100% made in Korea

2. Customizable options

- Adjustable tilting brackets providing maximum flexibility of aiming
- Various beam angles for different heights and asymmetric light distribution for flood lighting

- Versatile mounting options for different applications

3. Enhanced detailing for safety and ease of installation

- Superior thermal management by optimizing air circulation
- Rust proof SUS brackets for safety, with excellent resistance to corrosion, temperature extremes and chemicals
- Lightweight for secure and easy installation

About POSCO LED

POSCO LED is a global leader in LED industrial lighting and dedicated to introducing the most reliable and energy-efficient LED technologies to high energy-consuming industries. POSCO LED has proved its unparalleled expertise in LED industrial lighting in hundreds of facilities by reducing energy consumption and maintenance costs and by increasing productivity. Its strong commitment to reliability makes POSCO LED a trusted, long-term partner for quality customers all around the world. The company's products set the benchmark for high output industrial lighting. POSCO LED's quality products are lighting up major global landmarks including Messeturm in Frankfurt, Germany, the third tallest building in the EU.

The company has proven the credibility, safety and energy-efficiency of its products by receiving world renowned certifications and running test beds in hundreds of facilities in major markets. It produces highly reliable products of the highest quality, even in the most challenging environments (high temperature, high humidity and dust).

POSCO LED deals with everything related to LED lighting, ranging from LED lighting products to smart lighting control solutions, meeting a variety of lighting needs in industrial, commercial, public and residential environments by providing consultancy services for LED lighting through its team of experts.

POSCO LED was established jointly by POSCO, the world's most competitive steelmaker and a Fortune 500 company, Seoul Semiconductor, the world's fourth largest LED supplier and POSCO ICT, an expert company in the IT & engineering sector. POSCO LED has been committed to developing core technologies to enhance reliability and performance of LED lighting products such as advanced thermal management and improved luminous efficacy by collaborating with globally renowned research institutes and companies such as POSTECH, ranked first globally in the Times Higher Education 100 Under 50 rankings, RIST, and Seoul Semiconductor. POSCO LED has collected world-renowned design awards such as Red Dot awards, IF awards and Good Design awards with innovative designs by improving performance and reliability in its products, as well as providing aesthetic enhancements to working and living environments.

About POSCO

POSCO is a global steelmaking giant, a Fortune 200 companies six years in a row, named as "the most competitive steelmaker" by World Steel Dynamics for five consecutive years from 2010, and is one of the major business groups in Korea, standing beside Samsung and LG. POSCO has been listed on the world's leading stock exchanges such as the New York Stock Exchange (NYSE), the Tokyo Stock Exchange (TYO) and the London Stock Exchange (LSE). POSCO focuses its efforts in main business areas: steel, E&C, trade, energy and ICT, and its affiliates employ about 78,000 people in more than 100 countries and has about 200 affiliates.

POSCO puts the highest value on establishing and maintaining credibility with its customers, stockholders and employees, and has led the commitment of the global steel-making sector in regards to sustainable management. As a result, it has been announced that POSCO is to be included in the Global 100 Most Sustainable Corporations at the World Economic Forum in Davos, and the Dow Jones Sustainability Indices for ten consecutive years.

Contact for PR:

+82-31-723-3577 or rita@poscoled.com